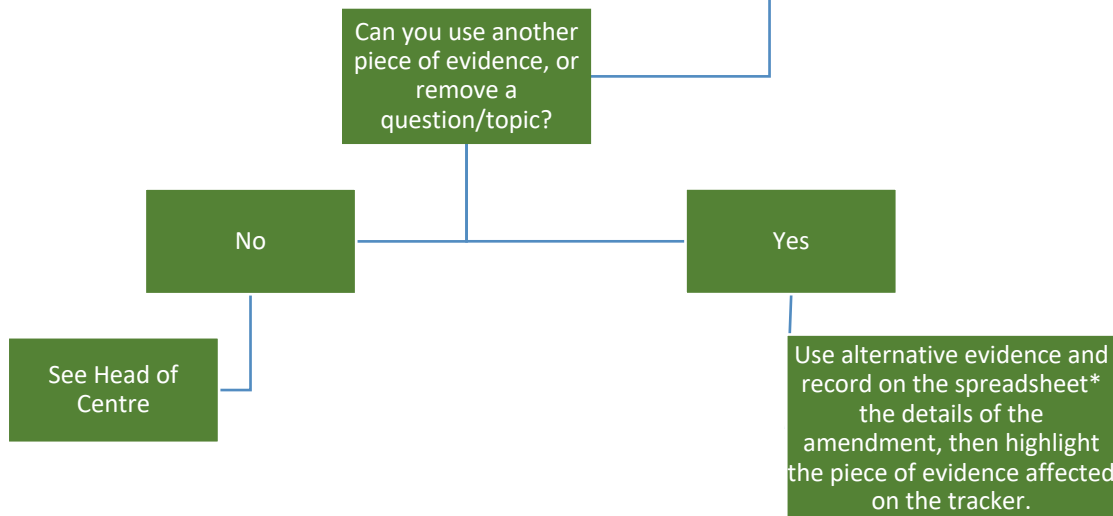
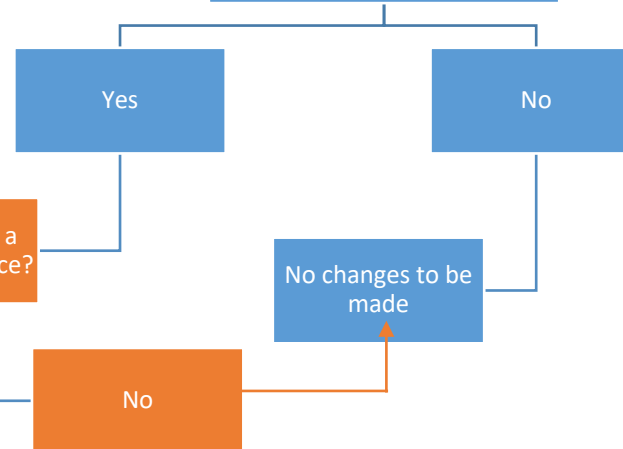


Reasons for applying different evidence/mark:

- A. Covid disruption is more than class peers
- B. Late Access Arrangements
- C. Mitigating Circumstances

# A Covid disruption is more than class peers

Covid disruption is more than class peers. Y11 - more than 10 days self isolating Sept-Dec. Y13 - more than 15 days self isolating Sept-Dec.



\*Complete section 1 of the individual amendments spreadsheet located in the JCQ folder in the TAG drive

# B Late Access Arrangements

Explain in section 2 of the individual amendments spreadsheet, located in the JCQ folder in the TAG drive. Highlight the evidence that has been affected in the TAG tracker.

Use judgement to review and apply a holistic grade.



# Mitigating Circumstances

